



Accessibility & Visual Guide

The Umbrella Project
Saturday 18th May
11.00am until 12.30pm

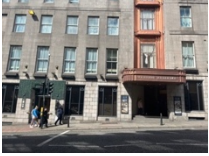
In Partnership with



Scottish Charity Number: SC045895



The Umbrella Project Installation will be unveiled here on Saturday 18th May from 11am. There is a picture on the front page of how it looks after the installation was done before in 2023.



The simplest way to access the area is to use Market Street. The Shiprow Village is at the side of The Douglas Hotel shown here.



The closest accessible parking would be on Queen Street, which can be accessed via King Street, and also continued down Queen Street beside The Lemon Tree giving 5 Accessible Spaces for Blue Badge Holders. These spaces cannot be guaranteed for the event.



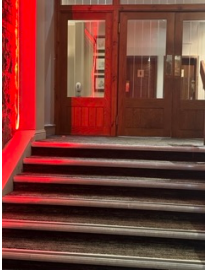
When you come around the side of the hotel as well as seeing the installation, there will also be signage about ADHD Foundation which you can see here. This will also be beside the doorway where you can access a quieter, sensory break out area should you or your loved-one wish.



Once you come through the black entrance door, which will also be used by people performing on the day, you can see there is a corridor area to come along. **This area is also wheelchair accessible for using the sensory space too.**



This area will be away from where people are standing about but may still be noisy. The Ninjas will have sensory backpacks with ear defenders you may borrow if this would be helpful.



This side door can also allow you to access the toilet facilities should you need them and there will be Ninjas and helpers around to help show you too.



The accessible toilet is behind the hotel reception area.

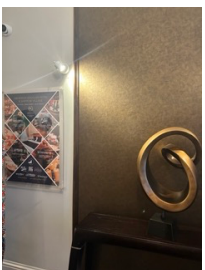
Please be aware there is NOT a changing space within The Douglas Hotel, closest Changing Space Facility would be within Union Square.



Within the accessible toilet space, there is no electric hand dryers, only paper towels to be used for hand drying.



Should you wish to come up to the sensory break out area if it's too busy or noisy, the Ninjas are always happy to have visitors come and say hello! The space we are using in the hotel is called **The Cameron Suite** and it can be accessed in the lift shown on the stairs beside it if you do not like lifts.



When the lift doors open, outside the lift area will look like this.



The Cameron Suite has the name beside the door, we will also have the doors open so you know you can come in to say hello!



Inside **The Cameron Suite**, the Ninjas will have their pop-up sensory tent and lots of sensory bits for you to come along and use. There will also be beanbags to sit on and power points if you wish to plug in any of your items. You can stay as long as the event is on for and before the Ninjas must go back to **Ninja HQ within The Trinity Centre**.



All the Ninjas are “seen in green” with bright green tops on so you can be sure to find any of us quickly and easily if you need any help. As well as beside the sensory space, the Ninjas will also be downstairs beside the umbrellas too.



All the Ninjas attending the day will have We Too! sensory bag packs with them, carrying a variety of aids you may borrow while attending if it helps you. It may be an opportunity to try something you haven't before, so please do ask!